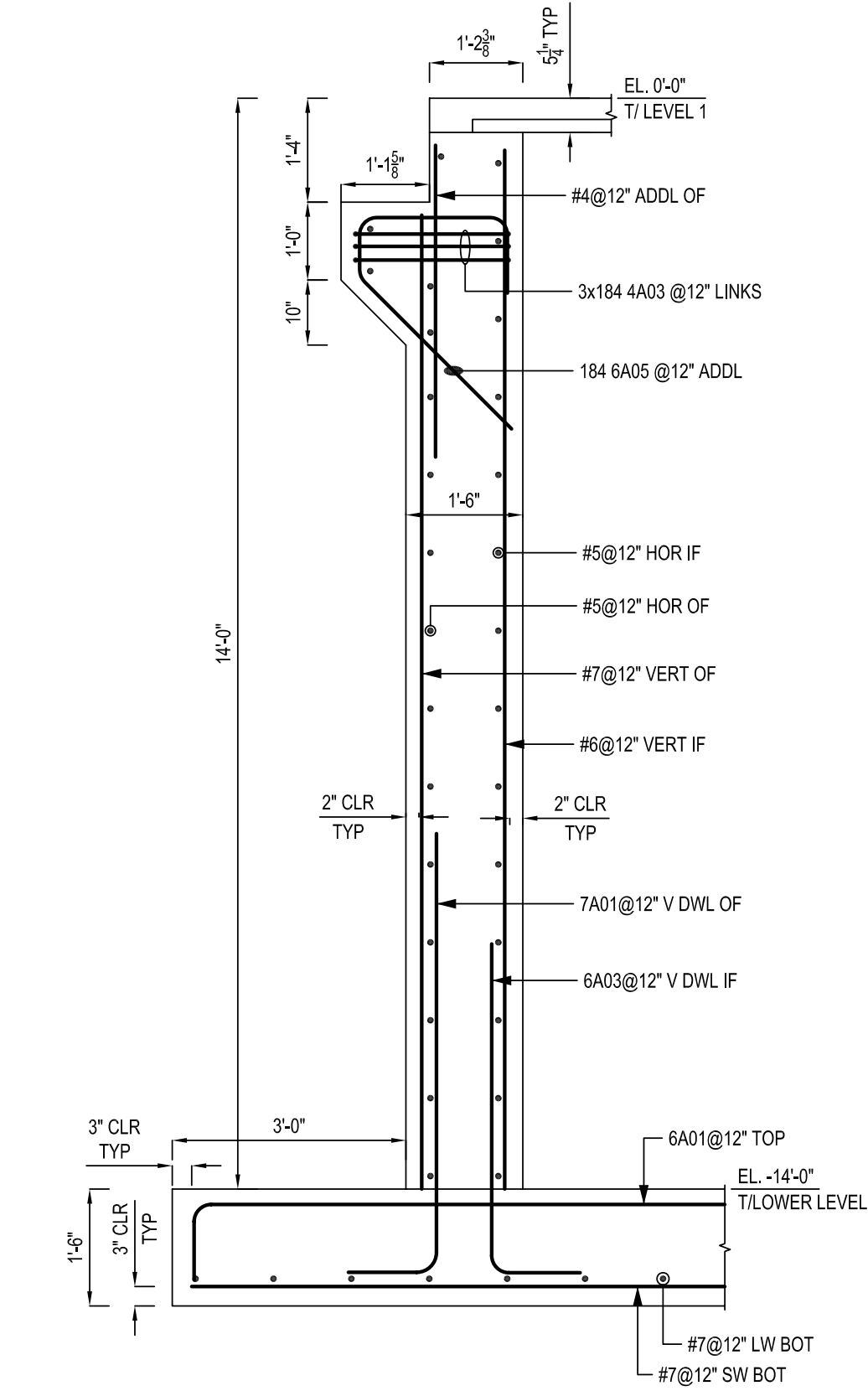
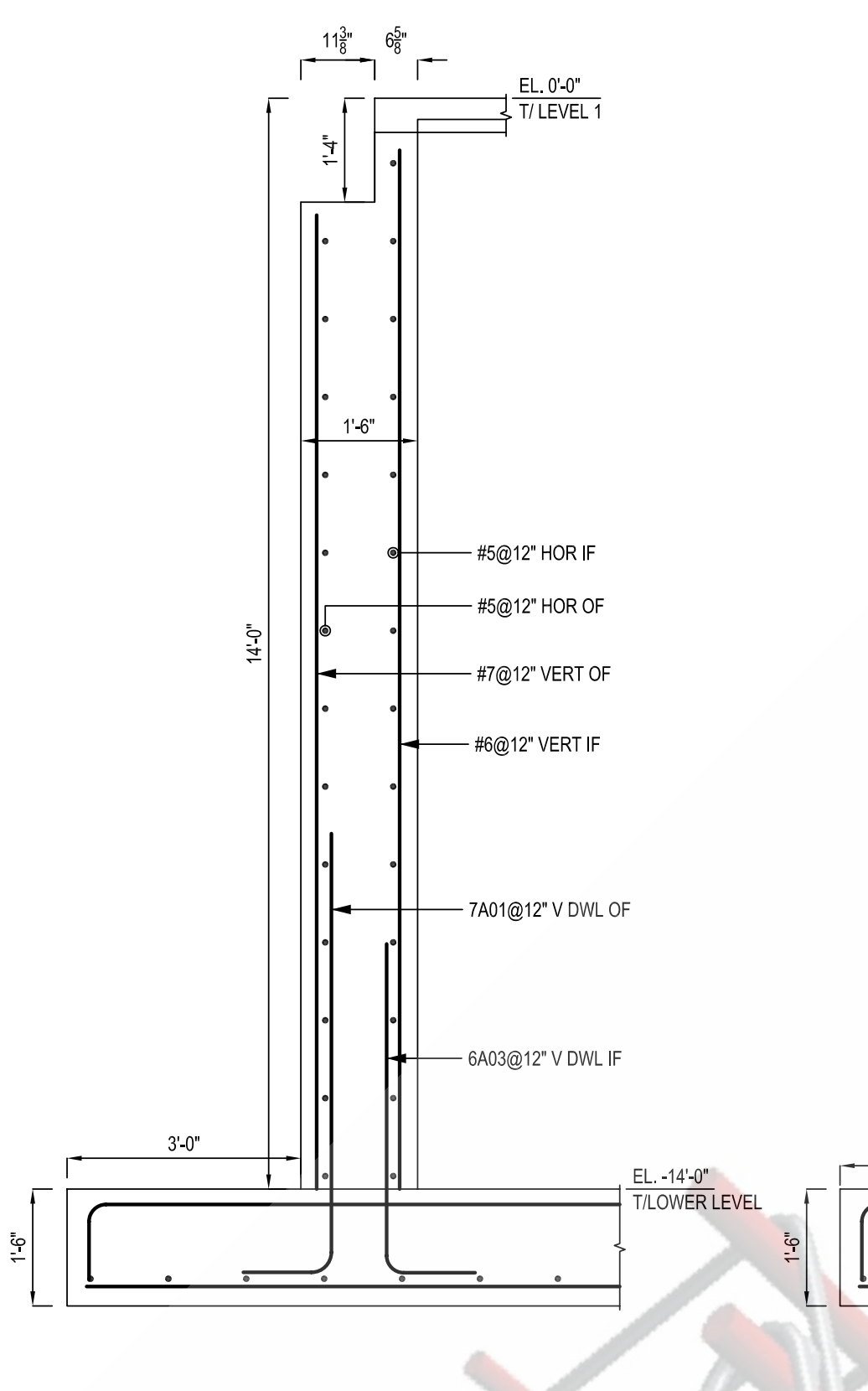


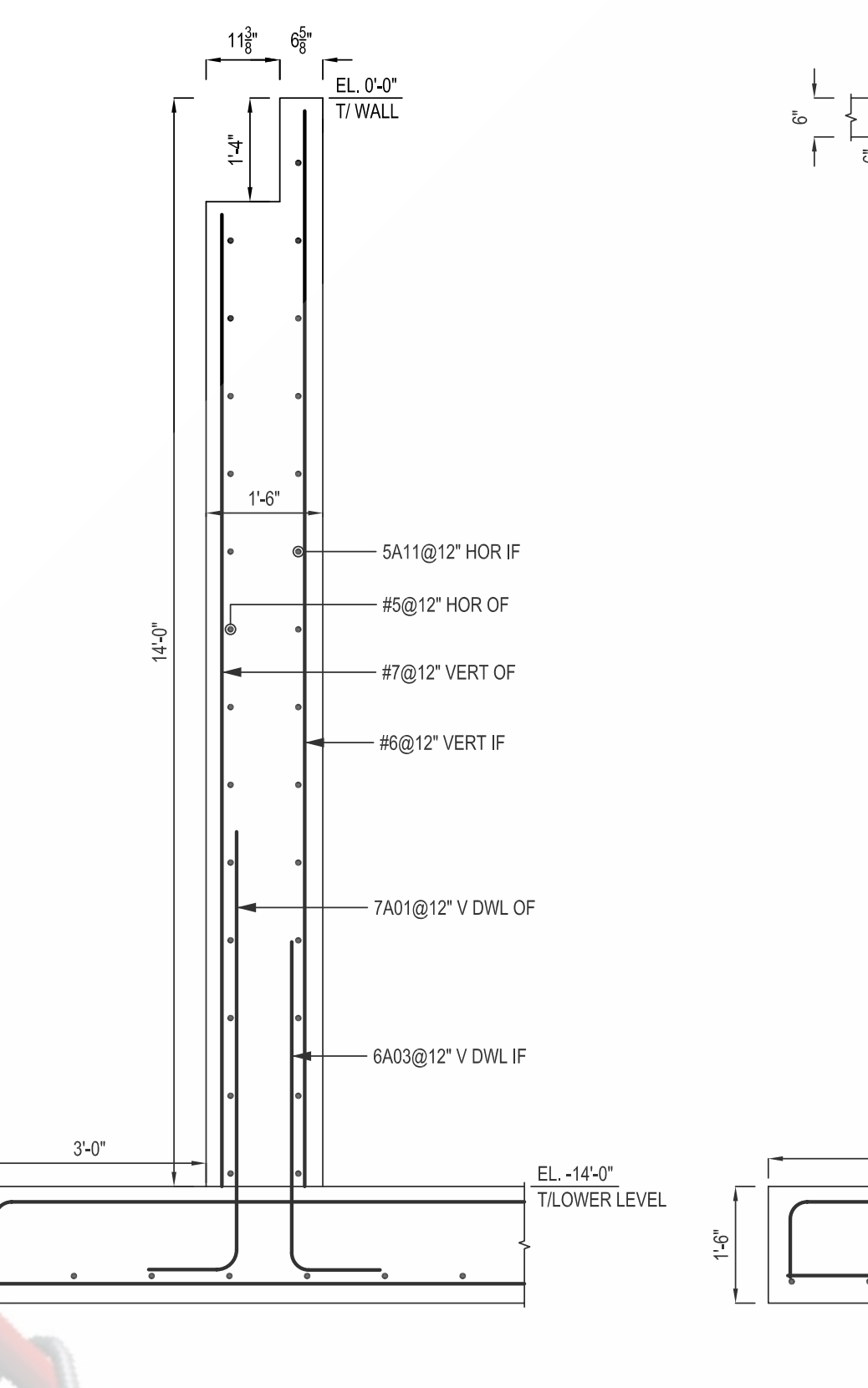
ONCE REBAR SERVICES



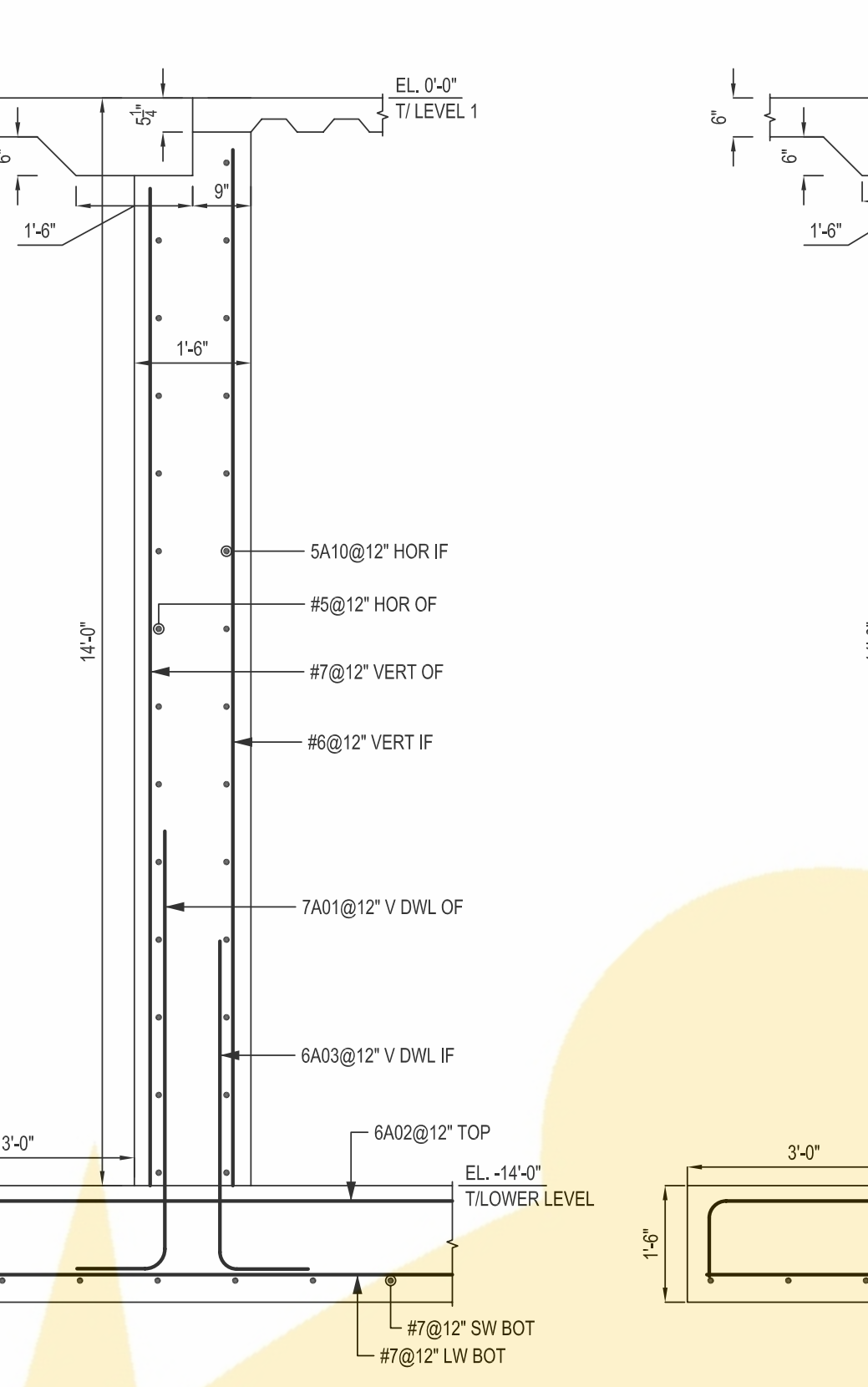
**SECTION 1**  
SCALE: 1/2"=1'-0"  
SDR: 8/S201,7/S310



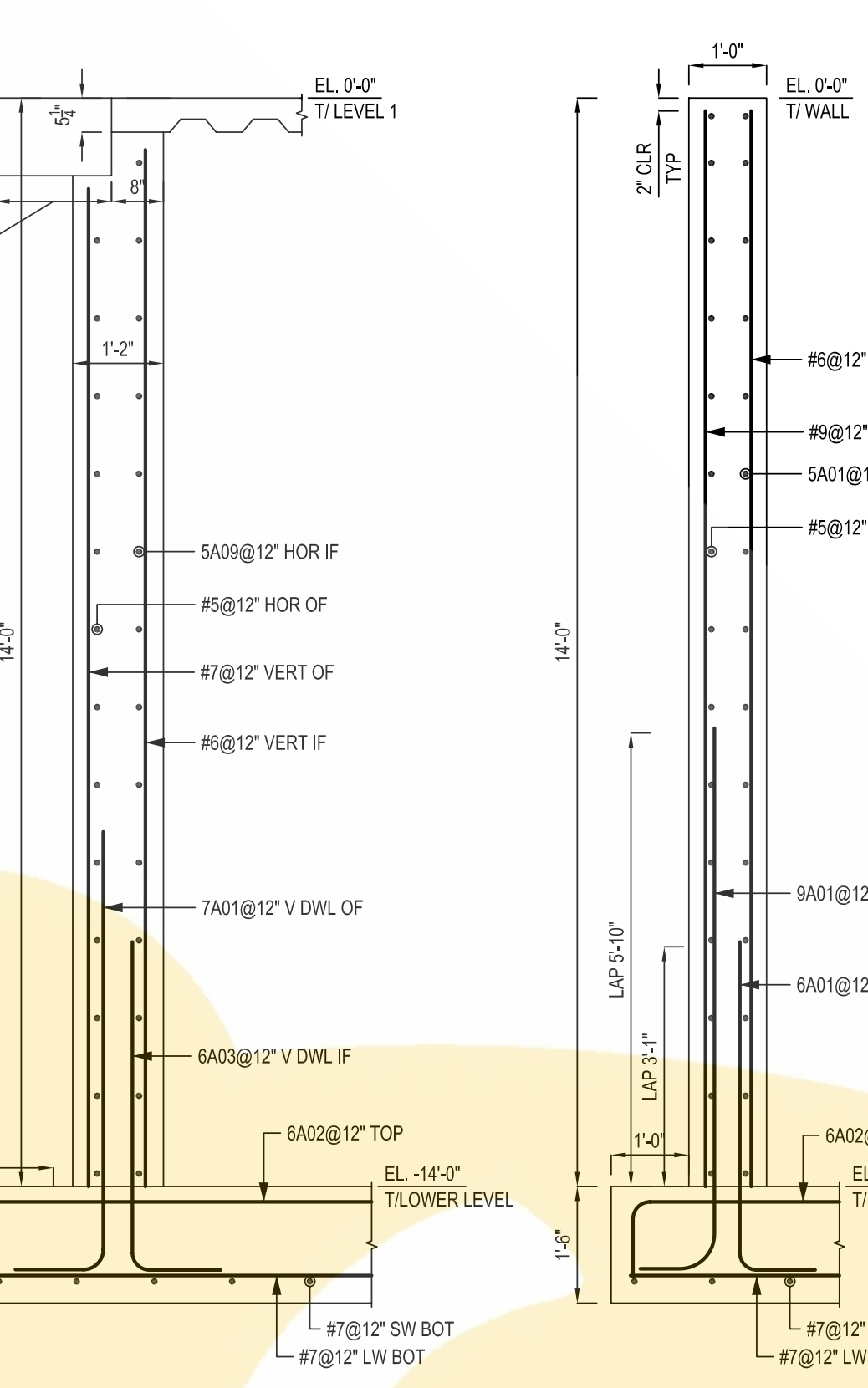
**SECTION 2**  
SCALE: 1/2"=1'-0"  
SDR: 8/S201,6/S310



**SECTION 3**  
SCALE: 1/2"=1'-0"  
SDR: 8/S201,3/S310



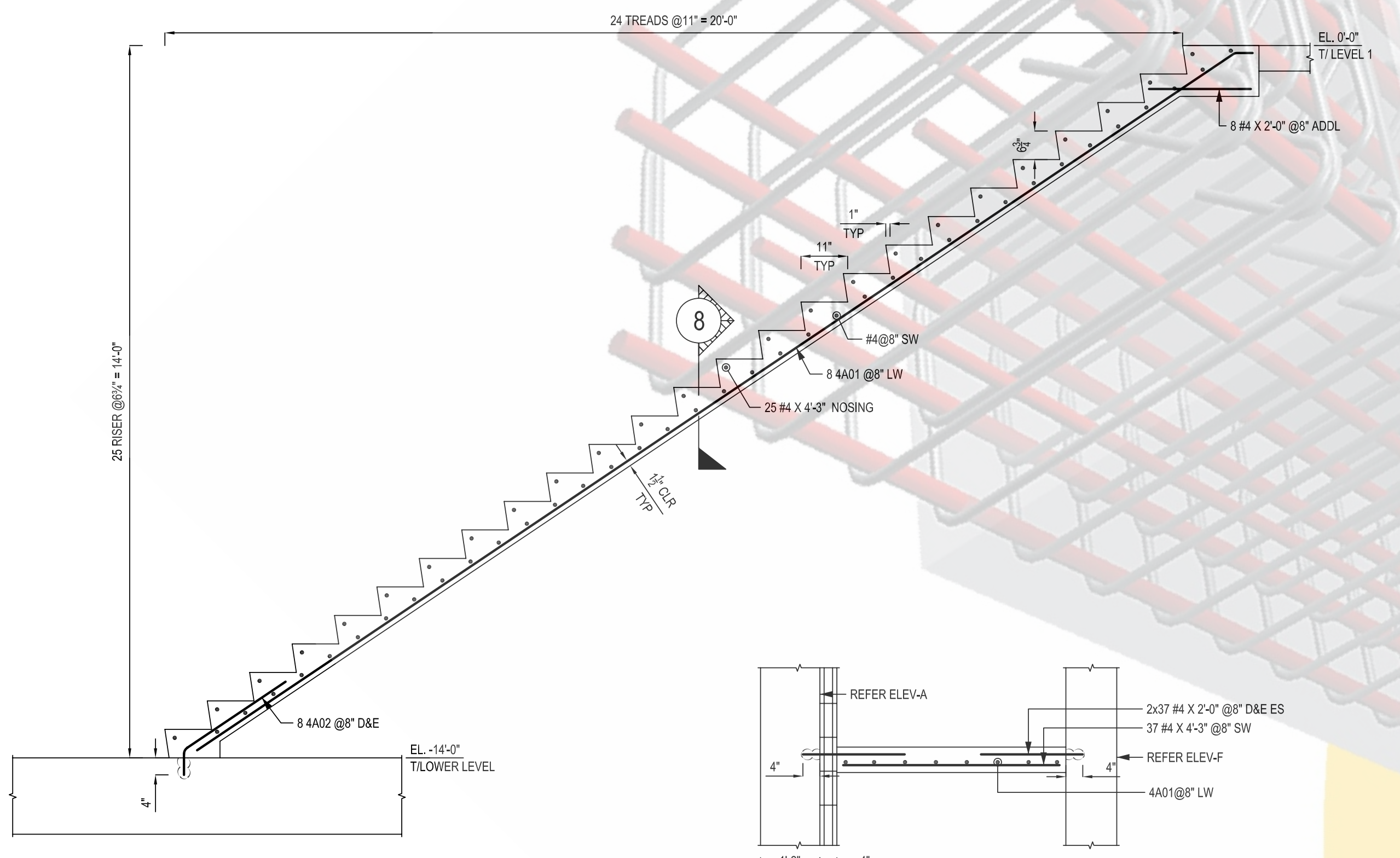
**SECTION 4**  
SCALE: 1/2"=1'-0"  
SDR: 8/S201,1/S310



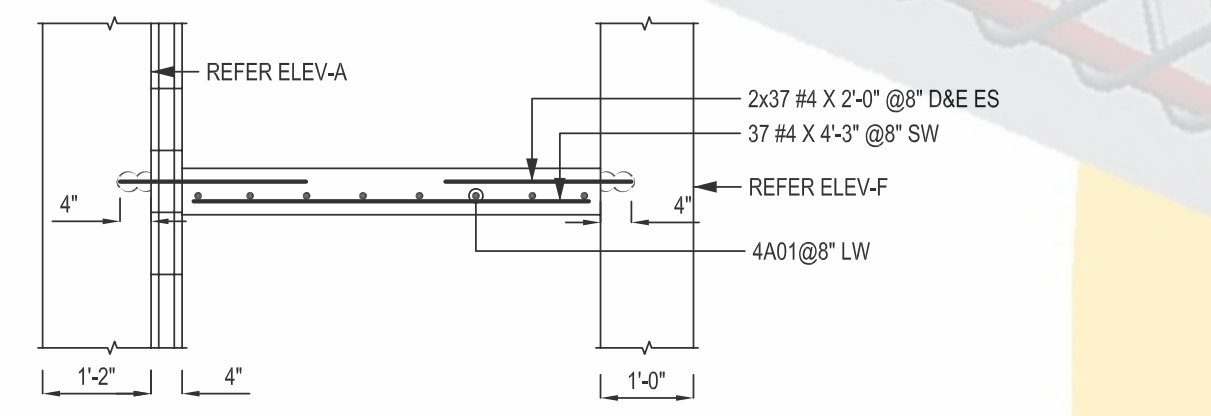
**SECTION 5**  
SCALE: 1/2"=1'-0"  
SDR: 8/S201,8/S310



**SECTION 6**  
SCALE: 1/2"=1'-0"  
SDR: 8/S211



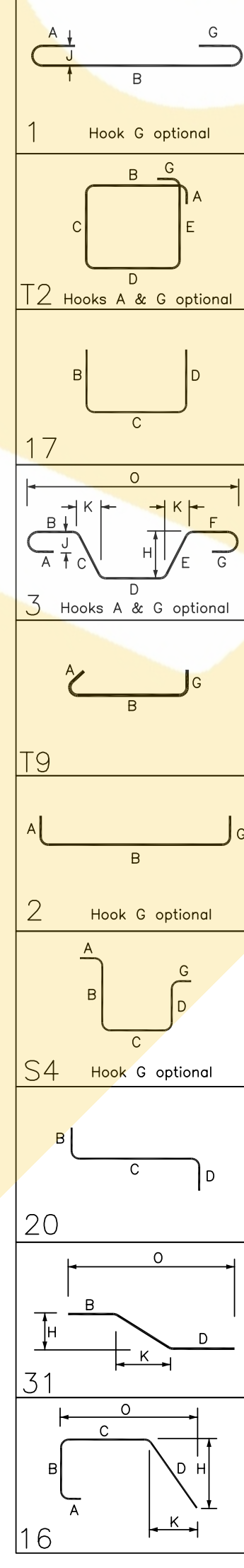
**SECTION 7**  
SCALE: 1/2"=1'-0"  
SDR: 9/S211



**SECTION 8**  
SCALE: 1/2"=1'-0"  
SDR: 8/S211

Release Number: R1.01-R1.03

Bar Mark	Qty	Size	Total Length	Type	A'	B'	C'	D'	E'	F'	G'	H'	I'	J'	K'	L'
3A01	12	#3	2'-9"	1	0'-5"	1'-11"										
3A02	18	#3	8'-0"	12	0'-4"	1'-9"	1'-11"	1'-9"	1'-11"							
3A03	336	#3	2'-7"	1	0'-5"	1'-9"										
3A04	18	#3	8'-4"	12	0'-4"	1'-9"	2'-1"	1'-9"	2'-1"							
3A05	12	#3	2'-11"	1	0'-5"	2'-1"										
3A06	168	#3	7'-8"	12	0'-4"	1'-9"	1'-9"	1'-9"	1'-9"							
3A07	470	#3	3'-2"	17		0'-6"	1'-2"	1'-6"								
3A08	120	#3	2'-10"	17	0'-6"	0'-10"	1'-4"									
3A09	75	#3	2'-8"	17		0'-6"	0'-8"	1'-6"								
4A01	8	#4	2'-11"	3		0'-4"	2'-6"			13'-8"	20'-4"	20'-8"				
4A02	8	#4	2'-11"	3		0'-6"	2'-5"			2'-0"	1'-3"	1'-9"				
4A03	552	#4	2'-9"	19	0'-4"					0'-4"						
4A04	30	#4	3'-8"	2	0'-8"	3'-0"										
4A05	30	#4	5'-10"	17			2'-0"	3'-10"								
4A06	8	#4	7'-5"	54	0'-4"	2'-1"	2'-6"	2'-1"		0'-4"						
4A07	8	#4	3'-4"	2	0'-8"	2'-8"										
4A08	6	#4	10'-4"	2	0'-8"	9'-0"				0'-8"						
4A09	6	#4	8'-4"	2	0'-8"	7'-0"				0'-8"						
4A10	12	#4	4'-2"	17		2'-1"	2'-1"									
5A01	15	#5	10'-4"	2	0'-10"	9'-6"										
5A02	15	#5	5'-10"	17		2'-5"	0'-8"	2'-7"								
5A03	2	#5	4'-9"	2	1'-0"	3'-9"										
5A04	80	#5	5'-2"	17		2'-7"	2'-7"									
5A05	15	#5	6'-8"	2	0'-10"	5'-0"				0'-10"						
5A06	15	#5	9'-6"	2	0'-10"	7'-10"				0'-10"						
5A07	15	#5	26'-0"	2	0'-10"	25'-2"										
5A08	26	#5	4'-11"	2	0'-10"	4'-1"										
5A09	1	#5	28'-9"	2	0'-10"	27'-11"										
5A10	12	#5	22'-7"	2	0'-10"	21'-9"										
5A11	12	#5	26'-9"	2	0'-10"	25'-11"										
5A12	2	#5	17'-8"	2	0'-10"	16'-10"										
5A13	1	#5	17'-2"	2	0'-10"	16'-4"										
5A14	24	#5	6'-0"	20		2'-7"	0'-10"	2'-7"								
5A15	24	#5	7'-10"	20		2'-7"	2'-8"	2'-7"								
5A16	12	#5	7'-8"	20		2'-7"	2'-6"	2'-7"								
5A17	14	#5	6'-0"	17		2'-7"	0'-10"	2'-7"								
5A18	47	#5	40'-0"	2	0'-10"	39'-2"										
5A19	12	#5	7'-5"	31		2'-7"	2'-4"	2'-6"		0'-4"	2'-3"	7'-5"				
5A20	12	#5	7'-5"	31		2'-7"	2'-7"	2'-7"		0'-2"	2'-3"	7'-5"				
5A21	2	#5	4'-11"	2	1'-2"	3'-9"										
5A22	12	#5	4'-2"	2	0'-10"	3'-4"										
5A23	36	#5	7'-2"	20		2'-7"	2'-0"	2'-7"								
5A24	13	#5	23'-11"	2	0'-10"	22'-3"				0'-10"						
5A25	3	#5	22'-0"	2	0'-10"	20'-4"				0'-10"						
5A26	6	#5	5'-8"	20		1'-1"	2'-0"	2'-7"								
5A27	12	#5	34'-2"	2	0'-10"	32'-6"				0'-10"						
5A28	11	#5	21'-11"	2	0'-10"	21'-1"										
5A29	1	#5	28'-4"	2	0'-10"	27'-6"										
5A30	1	#5	27'-8"	2	0'-10"	26'-10"										
5A31	1	#5	27'-3"	2	0'-10"	26'-5"										
5A32	1	#5	27'-5"	2	0'-10"	26'-7"										
5A33	1	#5	20'-8"	2	0'-10"	19'-10"										
6A01	47	#6	5'-3"	2	1'-0"	4'-3"										
6A02	447	#6	16'-0"	2	1'-0"	15'-0"										
6A03	425	#6	5'-5"	2	1'-2"	4'-3"										
6A04	7	#6	7'-0"	17		3'-1"	0'-10"	3'-1"								
6A05	184	#6	6'-6"	16	1'-0"	1'-11"	0'-9"	2'-9"		2'-0"	1'-10"	2'-8"				
7A01	452	#7	6'-10"	2	1'-2"	5'-8"										
7A02	33	#7	14'-9"	2	1'-0"	13'-9"										
7A03	14	#7	19'-1"	2	1'-0"	18'-1"										
8A01	116	#8	7'-8"	2	1'-4"	6'-4"										
9A01	48	#9	8'-0"	2	1'-0"	7'-0"										



MINIMUM SPLICE & EMBEDMENT LENGTH SCHEDULE

BAR SIZE	f <sub>c</sub> =3000 PSI(CASE-1)		f <sub>c</sub> =4000 PSI(CASE-1)	
	TOP BARS	OTHER BARS	TOP BARS	OTHER BARS
#3	26"	22"	24"	19"
#4	37"	29"	32"	25"
#5	47"	36"	40"	31"
#6	56"	43"	48"	37"
#7	81"	63"	70"	54"
#8	93"	72"	80"	62"
#9	105"	81"	91"	70"
#10	118"	91"	102"	79"
#11	131"	101"	113"	87"

ONCE REBAR SERVICES